



### 1. Classes & Weights:

Bambino	age 5 to 8	75 kg	TBA
T4 Mini	age 8 to 10	105 kg	68 sprocket
T4 Super Mini	age 9-12	112 kg	68 sprocket
T4 Junior	age 12 to 15	143 kg	74 sprocket & long slide
T4 Senior	age 15+	158 kg	21/78 or 19/71 sprocket
Masters	age 35+	168 kg	21/80 or 19/79 sprocket

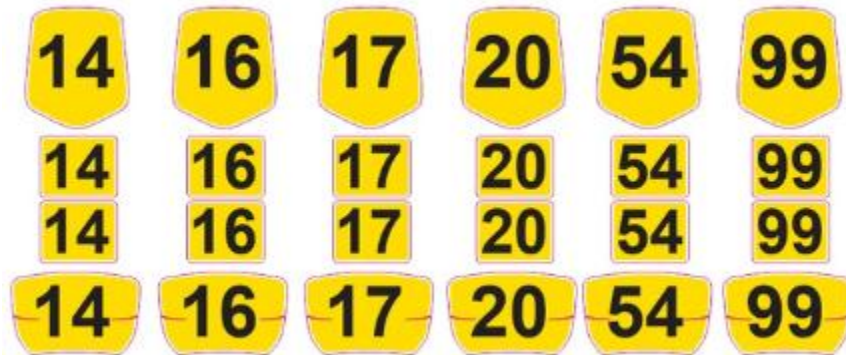
Mini classes and Cadet Classes will only use the short circuit at Formula-K.

### 2. Kart

- 2.1 Karts must be used as supplied from Tillotson South Africa (Read in conjunction with T4 SA rules).
- 2.2 Steering wheel and steering boss and seat can be changed freely according to the driver.
- 2.3 Any part used on a kart, which is not a Tillotson part, must be signed off by Tillotson South Africa.
- 2.4 Any engine stripped and assembled by any other than T4 South Africa will not be legible in the T4 South Africa Championship.
- 2.5 No parts not purchased or signed off by T4 SA may be used.
- 2.6 Weights on all karts need to be bolted securely on the seat and be deemed safe by the scrutineer.

### 3. Stickers & Numbers

- 3.1 Only Tillotson T4 Original sticker kits are permitted to be used.
- 3.2 Tillotson T4 stickers must be complete with Front bumper, Side Pods, Nassau Panel, floor tray and Fuel tank.
- 3.3 No additional stickers, branding or overlays are allowed except on the green marked areas as on the diagram below.
- 3.4 Tillotson reserves the right to request drivers to remove any stickers that may be considered unsuitable, offensive, political, or not in line with Tillotson brand values.
- 3.5 Number stickers must comply with the right backing and colour as stated in the rules. Otherwise, the kart will not pass scrutineering. See example below:



- |       |               |                                 |
|-------|---------------|---------------------------------|
| 3.5.1 | T4 Cadet      | TBA                             |
| 3.5.2 | T4 Mini       | Blue backing & White numbers.   |
| 3.5.3 | T4 Junior     | Green backing & White numbers.  |
| 3.5.4 | T4 Senior     | Yellow backing & Black numbers. |
| 3.5.5 | T4 Senior 168 | Red backing & White numbers.    |

#### **4. Race gear**

- 4.1 Helmet with double loop clip
- 4.2 Minis and Juniors must have a neck brace.
- 4.3 Rib protectors are mandatory.
- 4.4 Suit must cover from wrist to ankles and zipped up at all times within a race.
- 4.5 Gloves must be worn throughout the race.
- 4.6 Boots must be worn throughout the race with long socks.

#### **5. Scrutiny and Technical Control 25/26**

- 5.1 To compete at race events all drivers must complete scrutiny safety checks and present their race equipment in accordance with the World Of Motorsport South Africa (WOMZA) General Racing Regulations (GRR's) for 2025 as well as the 2024/2025 Karting South Africa WOMZA Standard Karting Regulations (WOMZA SKR's) and any Supplementary Regulations issued by the club for each race day as well as any instructions issued from time to time in WOMZA circulars or bulletins.
- 5.2 These standards will be upheld and monitored at race events in association with WOMZA
- 5.3 If the correct driver safety equipment is not presented or if the kart package isn't in line with regulations the driver will not be allowed to participate in the race.
- 5.4 The race organiser has the right to refuse entry to any driver who does not adhere to these regulations.

#### **6. Tyre & Rim Regulations**

- 6.1 Maxxis are the only tyre permitted for use except stated otherwise in the event SSR's.
- 6.2 Dry tyres are limited to one (1) set per 3 race events. These will be monitored.
- 6.3 Tyre changes can only take place on round 1,4 & 7. Any changes in between will not be allowed.  
Example: one set is used for round 1,2 & 3, if the competitor decides to stay on set number 1 of tyres for round 4, they will then only be allowed to change tyres on round 7 again.
- 6.4 Rain tyres are not limited at race events.
- 6.5 The events for new tyres or change of tyres are Round: 1; 4 & 7. If any change of a tyre is required due to damage, it needs to be notified in writing to the C.O.C.
- 6.6 Only T4 (FKR) rims are permitted to be used in the T4 SA series.

#### **7. T4 Championship Points**

- 7.1 Tillotson South Africa will offer prizes to T4 Nations Cup 2025/2026 by applying a points system to results from T4 Series Regional events.
- 7.2 Results are final as posted by the event organiser on race day.

- 7.3 Points will be equally awarded for all rounds.
- 7.4 Points will be awarded to drivers final finishing positions only.
- 7.5 All nominated rounds with three heats on the day will count, with competitors' worst 3 heats of the championship to be dropped.
- 7.6 **A DQ or any Technical Exclusion cannot be dropped and must be scored as a zero.**
- 7.7 In case of a tie with final championship standings the result will be determined by most 1<sup>st</sup> place finishes of relevant drivers. In case of another tie, it will be determined by most 2<sup>nd</sup> place finishes of relevant drivers, and so on...
- 7.8 All non-finishers will get 5 points less than the lowest placed finisher. A finisher will be deemed to have completed more than 60% of race distance.
- 7.9 Championship points will be awarded as follows:

1 <sup>st</sup> 35pt	2 <sup>nd</sup> 32pt	3 <sup>rd</sup> 30pt	4 <sup>th</sup> 29pt	5 <sup>th</sup> 28pt	6 <sup>th</sup> 27pt	7 <sup>th</sup> 26pt	8 <sup>th</sup> 25pt	9 <sup>th</sup> 24pt	10 <sup>th</sup> 23pt
11 <sup>th</sup> 22pt	12 <sup>th</sup> 21pt	13 <sup>th</sup> 20pt	14 <sup>th</sup> 19pt	15 <sup>th</sup> 18pt	16 <sup>th</sup> 17pt	17 <sup>th</sup> 16pt	18 <sup>th</sup> 15pt	19 <sup>th</sup> 14pt	20 <sup>th</sup> 13pt

## 8. Changing of classes:

- 8.1 If a competitor changes classes during the season points will not be transferred from one class to another.
- 8.2 Ages of competitors will play a big role for the next championship. If the competitor comes of age when they need to change class, they can move to the next class **in the year that they turn the** designated age.
- 8.3 e.g. Clarification of age in class: If you turn 12 in 2026, therefore you can start the 2025/2026 season in junior class. The same applies for all classes.

**Any competitor/team member/guardian that participates in disrespectful conduct against any official will be handled at the discretion of Tillotson South Africa and FKR.**



## TECHNICAL REGULATIONS

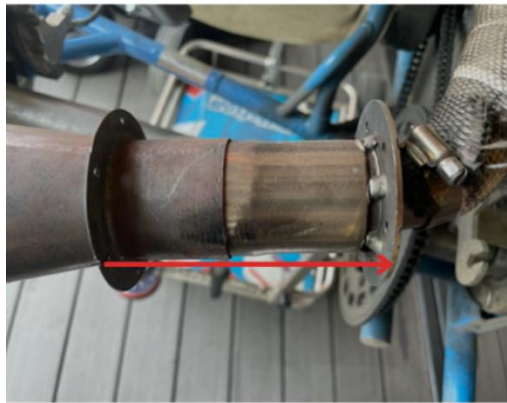
### 1. Engine

- 1.1. Engines must be sealed top and bottom and this can ONLY be done by Tillotson South Africa.
- 1.2. Competitors are allowed to have 2 engines only. Both engines must be registered and sealed by T4SA. Both engines must be Confirmed and checked by the scrutineer.
- 1.3. Carburettor must be the standard Tillotson carburettor.
- 1.4. All Junior karts:  
Must use the carburettor slide (47mm) to the one stipulated in the official Tillotson rules.  
See image below:



- 1.5. Spark Plug must be BCP6/7ES
- 1.6. Needle and float settings can be changed freely according to driver
- 1.7. Jets: This will be checked with needles.
  - 1.7.1. Main Jet for Senior and Senior 168: Size 112
  - 1.7.2. Junior: Size: 100
  - 1.7.3. Mini: Size: 70
  - 1.7.4. Cadet: Size: TBA.

- 1.8. Engine changes will only be allowed with written permission on the raceday and with sealed engines only.
- 1.9. Engine checks for compliance and sealing can be organised by Tillotson South Africa.
- 1.10. Any engine stripped and assembled by any other than T4 South Africa will not be legible in the T4 South Africa Championship.
- 1.11. Exhaust to manifold. The silencer and the manifold may not be modified in any way. Refer to the picture below.
- 1.12. Exhaust expansion pipe must be (80mm-110mm) as seen in the picture below.



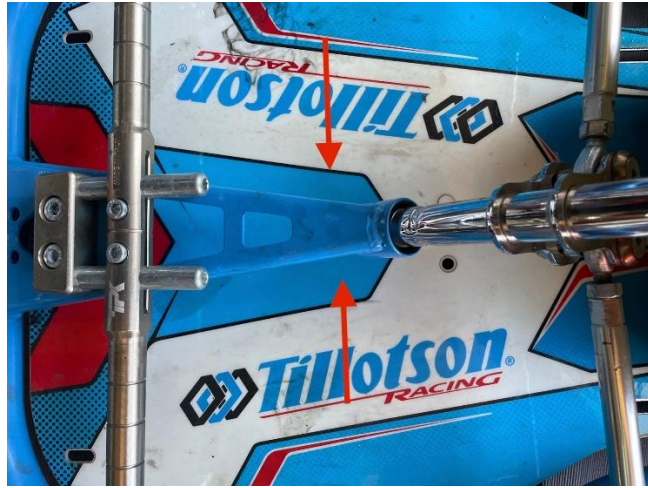
## **2. Sprockets**

### **2.1. Front Sprockets:**

- 2.1.1. Mini: Size 20 (front) 68 (rear)
- 2.1.2. Junior: Size: 21 (front) 74 (rear)
- 2.1.3. Senior: Size 21 / 78 OR 19 / 71
- 2.1.4. Senior 168: Size: 21 / 80 OR 19 / 73

## **3. Weight**

- 3.1. Weight may only be added on to the seat and kart frame (as below) and must be secured properly.
- 3.2. Up to 1.5kg is allowed to be bolted to the kart frame on the steering column support as shown below:



#### 4. Axle

- 4.1. Rear width overall: Mini must be 1100mm (axle 980mm). Junior, senior and masters must be 1400 mm (axle 1030mm).