



1. Classes & Weights:

Bambino	age 5 to 8	75 kg	TBA
T4 Mini	age 8 to 10	105 kg	68 sprocket
T4 Super Mini	age 9-12	112 kg	68 sprocket
T4 Junior	age 12 to 15	143 kg	74 sprocket & long slide
T4 Senior	age 15+	158 kg	21/78 or 19/71 sprocket
Masters	age 35+	168 kg	21/80 or 19/79 sprocket

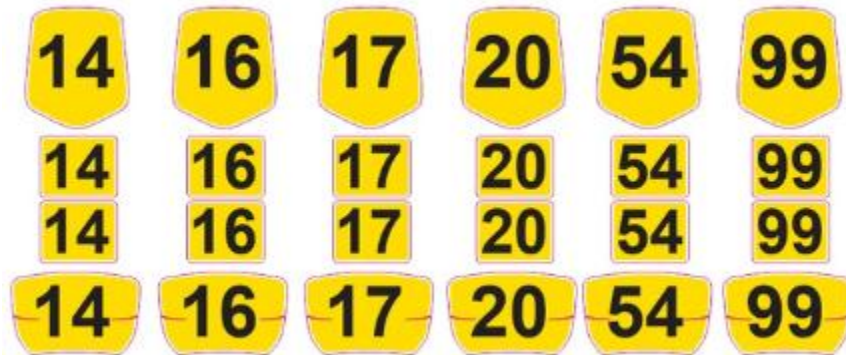
Mini classes and Cadet Classes will only use the short circuit at Formula-K.

2. Kart

- 2.1 Karts must be used as supplied from Tillotson South Africa (Read in conjunction with T4 SA rules).
- 2.2 Steering wheel and steering boss and seat can be changed freely according to the driver.
- 2.3 Any part used on a kart, which is not a Tillotson part, must be signed off by Tillotson South Africa.
- 2.4 Any engine stripped and assembled by any other than T4 South Africa will not be legible in the T4 South Africa Championship.
- 2.5 No parts not purchased or signed off by T4 SA may be used.
- 2.6 Weights on all karts need to be bolted securely on the seat and be deemed safe by the scrutineer.

3. Stickers & Numbers

- 3.1 Only Tillotson T4 Original sticker kits are permitted to be used.
- 3.2 Tillotson T4 stickers must be complete with Front bumper, Side Pods, Nassau Panel, floor tray and Fuel tank.
- 3.3 No additional stickers, branding or overlays are allowed except on the green marked areas as on the diagram below.
- 3.4 Tillotson reserves the right to request drivers to remove any stickers that may be considered unsuitable, offensive, political, or not in line with Tillotson brand values.
- 3.5 Number stickers must comply with the right backing and colour as stated in the rules. Otherwise, the kart will not pass scrutineering. See example below:



- | | | |
|-------|---------------|---------------------------------|
| 3.5.1 | T4 Cadet | TBA |
| 3.5.2 | T4 Mini | Blue backing & White numbers. |
| 3.5.3 | T4 Junior | Green backing & White numbers. |
| 3.5.4 | T4 Senior | Yellow backing & Black numbers. |
| 3.5.5 | T4 Senior 168 | Red backing & White numbers. |

4. Race gear

- 4.1 Helmet with double loop clip
- 4.2 Minis and Juniors must have a neck brace.
- 4.3 Rib protectors are mandatory.
- 4.4 Suit must cover from wrist to ankles and zipped up at all times within a race.
- 4.5 Gloves must be worn throughout the race.
- 4.6 Boots must be worn throughout the race with long socks.

5. Scrutiny and Technical Control 25/26

- 5.1 To compete at race events all drivers must complete scrutiny safety checks and present their race equipment in accordance with the World Of Motorsport South Africa (WOMZA) General Racing Regulations (GRR's) for 2025 as well as the 2024/2025 Karting South Africa WOMZA Standard Karting Regulations (WOMZA SKR's) and any Supplementary Regulations issued by the club for each race day as well as any instructions issued from time to time in WOMZA circulars or bulletins.
- 5.2 These standards will be upheld and monitored at race events in association with WOMZA
- 5.3 If the correct driver safety equipment is not presented or if the kart package isn't in line with regulations the driver will not be allowed to participate in the race.
- 5.4 The race organiser has the right to refuse entry to any driver who does not adhere to these regulations.

6. Tyre & Rim Regulations

- 6.1 Maxxis are the only tyre permitted for use except stated otherwise in the event SSR's.
- 6.2 Dry tyres are limited to one (1) set per 3 race events. These will be monitored.
- 6.3 Tyre changes can only take place on round 1,4 & 7. Any changes in between will not be allowed.
Example: one set is used for round 1,2 & 3, if the competitor decides to stay on set number 1 of tyres for round 4, they will then only be allowed to change tyres on round 7 again.
- 6.4 Rain tyres are not limited at race events.
- 6.5 The events for new tyres or change of tyres are Round: 1; 4 & 7. If any change of a tyre is required due to damage, it needs to be notified in writing to the C.O.C.
- 6.6 Only T4 (FKR) rims are permitted to be used in the T4 SA series.

7. T4 Championship Points

- 7.1 Tillotson South Africa will offer prizes to T4 Nations Cup 2025/2026 by applying a points system to results from T4 Series Regional events.
- 7.2 Results are final as posted by the event organiser on race day.

- 7.3 Points will be equally awarded for all rounds.
- 7.4 Points will be awarded to drivers final finishing positions only.
- 7.5 All nominated rounds with three heats on the day will count, with competitors' worst 3 heats of the championship to be dropped.
- 7.6 **A DQ or any Technical Exclusion cannot be dropped and must be scored as a zero.**
- 7.7 In case of a tie with final championship standings the result will be determined by most 1st place finishes of relevant drivers. In case of another tie, it will be determined by most 2nd place finishes of relevant drivers, and so on...
- 7.8 All non-finishers will get 5 points less than the lowest placed finisher. A finisher will be deemed to have completed more than 60% of race distance.
- 7.9 Championship points will be awarded as follows:

1 st 35pt	2 nd 32pt	3 rd 30pt	4 th 29pt	5 th 28pt	6 th 27pt	7 th 26pt	8 th 25pt	9 th 24pt	10 th 23pt
11 th 22pt	12 th 21pt	13 th 20pt	14 th 19pt	15 th 18pt	16 th 17pt	17 th 16pt	18 th 15pt	19 th 14pt	20 th 13pt

8. Changing of classes:

- 8.1 If a competitor changes classes during the season points will not be transferred from one class to another.
- 8.2 Ages of competitors will play a big role for the next championship. If the competitor comes of age when they need to change class, they can move to the next class **in the year that they turn the** designated age.
- 8.3 e.g. Clarification of age in class: If you turn 12 in 2026, therefore you can start the 2025/2026 season in junior class. The same applies for all classes.

Any competitor/team member/guardian that participates in disrespectful conduct against any official will be handled at the discretion of Tillotson South Africa and FKR.



TECHNICAL REGULATIONS

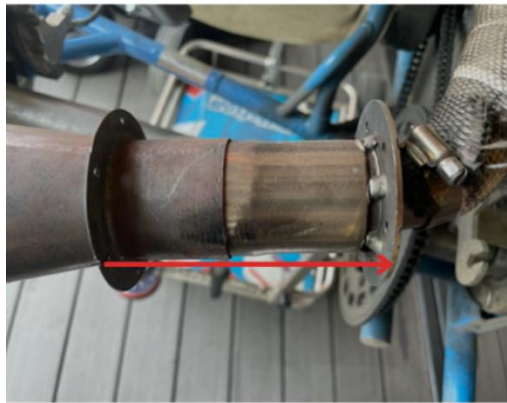
1. Engine

- 1.1. Engines must be sealed top and bottom and this can ONLY be done by Tillotson South Africa.
- 1.2. Competitors are allowed to have 2 engines only. Both engines must be registered and sealed by T4SA. Both engines must be Confirmed and checked by the scrutineer.
- 1.3. Carburettor must be the standard Tillotson carburettor.
- 1.4. All Junior karts:
Must use the carburettor slide (47mm) to the one stipulated in the official Tillotson rules.
See image below:



- 1.5. Spark Plug must be BCP6/7ES
- 1.6. Needle and float settings can be changed freely according to driver
- 1.7. Jets: This will be checked with needles.
 - 1.7.1. Main Jet for Senior and Senior 168: Size 112
 - 1.7.2. Junior: Size: 100
 - 1.7.3. Mini: Size: 70
 - 1.7.4. Cadet: Size: TBA.

- 1.8. Engine changes will only be allowed with written permission on the raceday and with sealed engines only.
- 1.9. Engine checks for compliance and sealing can be organised by Tillotson South Africa.
- 1.10. Any engine stripped and assembled by any other than T4 South Africa will not be legible in the T4 South Africa Championship.
- 1.11. Exhaust to manifold. The silencer and the manifold may not be modified in any way. Refer to the picture below.
- 1.12. Exhaust expansion pipe must be (80mm-110mm) as seen in the picture below.



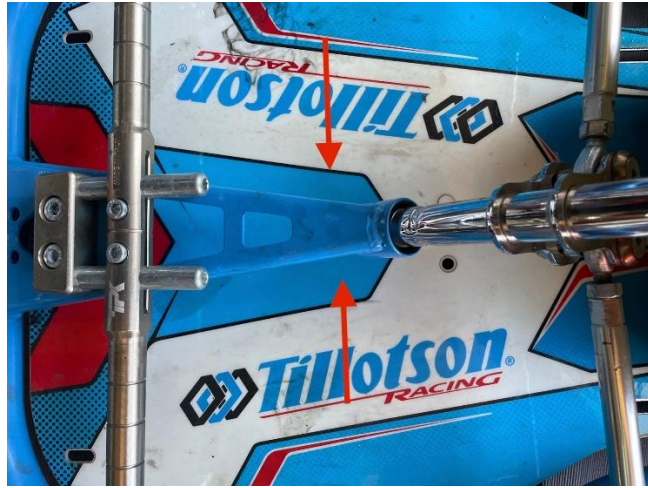
2. Sprockets

2.1. Front Sprockets:

- 2.1.1. Mini: Size 20 (front) 68 (rear)
- 2.1.2. Junior: Size: 21 (front) 74 (rear)
- 2.1.3. Senior: Size 21 / 78 OR 19 / 71
- 2.1.4. Senior 168: Size: 21 / 80 OR 19 / 73

3. Weight

- 3.1. Weight may only be added on to the seat and kart frame (as below) and must be secured properly.
- 3.2. Up to 1.5kg is allowed to be bolted to the kart frame on the steering column support as shown below:



4. Axle

- 4.1. Rear width overall: Mini must be 1100mm (axle 980mm). Junior, senior and masters must be 1400 mm (axle 1030mm).



SPORTING REGS

1. Race Events

The organising and running of race events are the sole responsibility of Tillotson South Africa.

- 1.1. Events are run in association with WOMZA safety guidelines.
- 1.2. Protests can be made with the race secretary and requires a fee of R1500.
- 1.3. If there is to be a protest against the C.O.C or any other decision, a protest fee of R1500 will be applicable. Decision of the steward will be final.
- 1.4. Only marshals **are allowed** to restart karts in case of spin-out on track.
- 1.5. When protesting, other competitors can only be counted as witnesses.
- 1.6. Equipment can be protested. Strip/check on the engine will then be done by T4SA after the race meeting.
- 1.7. Protest fee will only be returned if the equipment is deemed to be non-compliant.

2. Event Structure

- 2.1 Each event will be a one-day only event.
- 2.2 Race events, all rounds, are scheduled to run to the same format. The format and structure is based on time per session/race.
- 2.3 Only the competitor and ONE Mechanic/coach/parent is allowed at the weighbridge or parc ferme area. No parent/coach/mechanic is allowed in at the weighbridge area without a wristband or tag.
- 2.4 Trolleys are compulsory in the pits. No driving in the pits will be tolerated.

3. Race Format

- 1 x Practice (15 Minutes)
- 1 x Qualifying (10 Minutes)
- 2 x Heats (12 Laps)
- 1 x Final (15 Laps)
- Heat 1 will start as per the fastest lap in Qualifying
- Heat 2 will start as per the results of Heat 1
- Heat 3 will start as per the results of Heat 2

4. Starter

- 4.1 A competitor is deemed to be a starter when they have passed the white line at the pit exit (pre-race grid) to the circuit.
- 4.2 *Note: If there are any delays related to weather, accidents or any other unforeseen circumstances the event organiser has the right to amend or change the event format/structure on the day. The event organiser also has the right to cancel the event based on any unforeseen circumstances.*

5. Penalties

- All penalties if any, will be given by the COC and/or steward

Penalties

Code Penalty

- A Exclusion from results of that event
- B Exclusion from results of that heat
- C 30 Second addition to race time
- D 1st time:5 Second addition to race time
 - 2nd time: 10 second
 - 3rd time:15 seconds
- E Start at rear of grid, DQ for last heat
- F Penalty at COC discretion

Description of Infringement:

Post race Repeat

- | | | |
|--|-----|-----|
| • 5.1 Inconsiderate, intimidatory, unsporting, reckless, dangerous or inappropriate conduct. | B/A | |
| • 5.2 Ignoring Flags | C | B/A |
| • 5.3 Under the influence of alcohol or drugs. | A | A |
| • 5.4 Speeding in the pits. | B | A |
| • 5.5 Breach of direction of travel. | B | A |
| • 5.6 Starting procedure. | D | D |
| • 5.7 Breach scale procedure. | D/B | B/A |
| • 5.8 Improper circuit entry/exit. | D | C |
| • 5.9 Underweight. | E | E |
| • 5.10 Kart Identification / Transponder mounting | D | C |
| • 5.11 Breach of tyre restrictions | B | A |
| • 5.12 COC discretionary penalty | F | F |

6. Front Fairing Penalties

- 6.1 The use of a homologated front fairing and the homologated front fairing mounting kit is mandatory from qualifying until the final heat.
- 6.2 Correct installation of the "Front Fairing" (using the front mounting kit) must always be in the correct position during a competition.
- 6.3 If the judge of fact reports that the front fairing on one or more karts was no longer in the correct position on the drivers return to parc ferme, in all situations **a time penalty of 3 places** will be imposed automatically on the driver(s) concerned. This time penalty is not susceptible to appeal.

- 6.4 When the Scrutineer/Judge of Fact sends the report regarding the incorrect position of the front fairing, the Stewards will automatically apply the decision. The Entrants concerned shall not be invited to sign the decision documents.
- 6.5 Should a Driver or third party be found/proved to have intentionally replaced or attempted to fit a front fairing which is not installed correctly during the race, the last lap or after the "checker flag" was waved this will lead to a disqualification from the heat.
- 6.6 Nose-cone penalty will strictly be applied. Therefore, no pushing other competitors into pits are allowed or any other form of it.
- 6.7 **NOSE CONE PENALTY:** 3 place penalty as per the COC (eg: if you finish 3rd but have a nose cone penalty you'll be placed 6th for that heat but you will still be allowed to start 3rd for the next heat.

7. Penalty Card System

Tillotson t4s and any other series joining FKR race days.

The System will be loosely based on the card system used to control footballers during matches with yellow and red cards being issued depending on the severity of the offence. The card system will pertain to the conduct of all drivers in the series both on and off the circuit, as well as spectators and team personal related to drivers during the race weekend. Race weekends commence on Friday morning when the venue is opened for official practice and concludes when the venue is locked on Saturday evening.

Offences will include among others:

- 7.1 Dangerous or elicit driving standards.
- 7.2 Verbal abuse of any persons within the grounds.
- 7.3 Physical abuse of any persons within the grounds.
- 7.4 Failure to follow safety standards of the circuit and pit area.
- 7.5 Failure to follow the instructions of officials.
- 7.6 Use or brandishing of any weapons within the grounds regardless if legal or otherwise.
- 7.7 Excessive use of foul language.
- 7.8 Excessive consumption of alcohol.
- 7.9 Malicious protests.
- 7.10 Purposefully bringing the series into disrepute.
- 7.11 Defamation of character or the goodwill of any team and or persons involved in the series.

Any Competitor including his/her spectators or team personal suspected of any behaviour that may be deemed unfit for the series will be called to sit in front of the FKR and Tillotson Advisory team, this meeting will occur at a time deemed appropriate but the advisory team but the matter must be concluded by no later than 10:00 am on the Wednesday following the event. All parties involved in the incident will be given an opportunity to describe said incident in their own words to the team, once done so the team will vote on what card if any will be issued. Should a card be necessary, it will be issued immediately. Should any competitor be under the age of 18, the guardian who signed as entrant must be present on the behalf of the competitor.

FKR & T4 SA expresses its rights to admission into the series and all card decisions are final.

Yellow Cards

A Yellow card will first be issued as a warning and a decal will be placed on both side number boards of the competitors kart to signify such, Yellow cards must be carried for the duration of 3 events (9 heats) , should a competitor fail to compete in an event for whatever reason that event will not be counted towards the yellow card. Should a competitor be involved in any other incident during these 3 events this will automatically result in another yellow card being issued resulting in a red card.

Red Cards

Red Cards will be issued in the event of a severe offence, Red Cards will result with a minimum ban from the either the next heats up to a maximum of 3 events (9 heat) ban.

All other penalties will be as per the WOMZA GRR's for 2024 as well as the 2024 KSA WOMZA SKR's

- **Any Technical Infraction** - DQ (cannot be dropped and must be scored as a zero)
- All other penalties will be as per the WOMZA GRR's for 2024 as well as the 2024 KSA WOMZA SKR's
- The rights of Protest are reserved and must be in writing to the race secretary within 30 minutes of the Official Results posted with the applicable fee: R1500.